



SCAN FOR LOCATION



Corporate Office:
Elfin Infra Builders Pvt Ltd.,
 "Elfin Castle", 433/20, Belvanki Colony,
 1st Cross, Keshwapur, Hubli - 580023.
Phone: 0836 3500896

For bookings, contact:
Mob: 81472 83999 / 81472 84999
Web: Elfininfrabuildersprivatelimited.bizdigital.com
 Email: elfin_builders@yahoo.com

Site Address: Near Pavan Dairy, Gopankoppa Sullla Road, Hubli - 58002.

Disclaimer: Images, plans, furniture layout, drawings, renderings, perspectives, amenities and features mentioned herein are only indicative of the kind of development proposed. The developers reserve the right to make changes without prior notice or obligation.

Architects



SIMONS AND ASSOCIATES
 ARCHITECTS, ENGINEERS(CIVIL),
 INTERIOR DESIGNERS & VALUERS

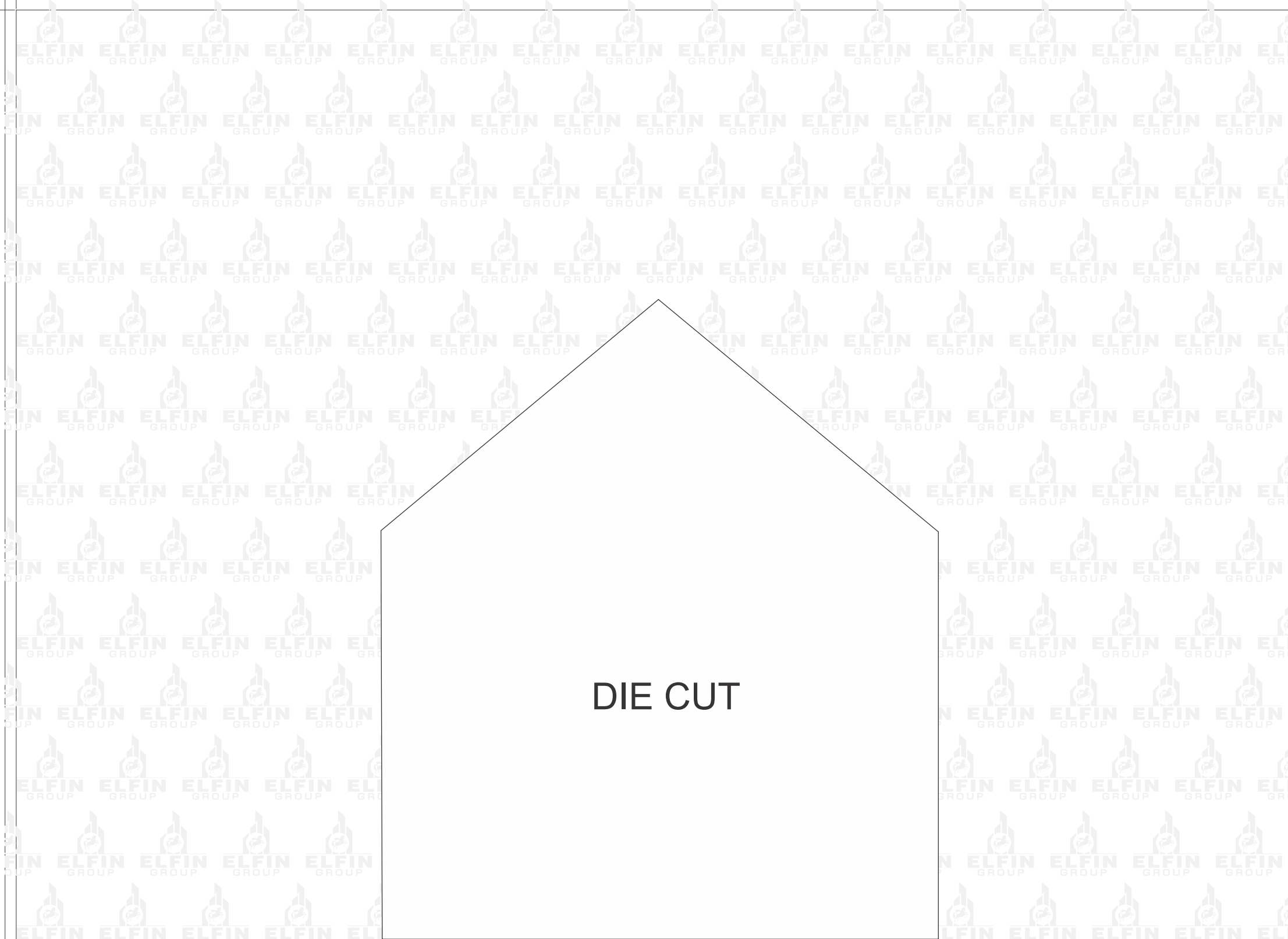
First floor C.J.Complex K.M.Marg, Udupi - 576 101 Ph.:0820-253484	S/722, Manipal center South Block, Dickenson Road, Bangalore - 560 042 Ph.:080-25599447
---	---

Member of
CREDAI
 Hubballi - Dharwad



ELFIN NEBULA
SIDDESHWARA
 Residential Apartments

An abode of affordability !!



DIE CUT



A legacy of quality.

Elfin Infra Builders Pvt Ltd was established by professionals in the construction business with a vision to create comfortable living spaces and provide a better quality of life to the people who inhabit them. We are committed to meeting your requirements, fulfilling your needs and offering you the best in construction.



ELFIN NEBULA
SIDDESHWARA
Residential Apartments



Golden opportunity to own a home at a an
affordable price.



**ELFIN NEBULA
SIDDESHWARA**
Residential Apartments

For a contented life, it is not only about chasing dreams that count. It is living the dream everyday, from moment to moment and what better way in your own "home sweet home" which is easy on your finances too !! A home which you can cherish and where you can enjoy beautiful moments with your loved ones.

Elfin Infra Builders Pvt Ltd are proud to present, **Elfin Nebula Siddeshwara Residential Apartments**, a pleasant living option at Gopankoppa Sulla Road, one of the peaceful locations of Hubli, far from noise and pollution. Here is a blend of comfortable living and vibrant surroundings, with easy access to all of your family's daily destinations.

This enviable address offers 112 , 1BHK, 2BHK and 3BHK homes on 8 floors, where no corner fails to delight !!

The ground floor is dedicated to parking and commercial space.

So Let The New Life Begin !!

**ALL AT
MY PRICE !!**





Comfortable living redefined.

Elfin Nebula Siddeshwara Residential Apartments are all set to give a whole new interpretation to apartment living. The well planned architecture has taken care of all the smallest details to ensure that your living experience here is nothing short of fascination. With emphasis on precise planning of the internal layout of each home, wide corridors on each floor which allow seamless movement throughout and with facilities that give peace of mind, here is a happy environment for the entire family.

The carefully chosen location makes sure you stay connected to everything. Work places, schools and colleges, shopping zones, parks, entertainment destinations and hospitals are all closeby. You also have easy access to the rest of the city. The perfect location of Elfin Nebula Siddeshwara Residential Apartments makes for the best of accessibility and least of travel nuisance.

**ELFIN NEBULA
SIDDESHWARA**
Residential Apartments

PROXIMITIES

SCHOOLS AND COLLEGES

- ◆ Sanskaar CBSE English Medium School 5.1 km
- ◆ Oxford College 4.5 km
- ◆ Chinmaya PU Collage 2 km
- ◆ St Mary's School 3.8 km
- ◆ St Michael School 3.2 km
- ◆ Fatima College 4.6 km
- ◆ J K School 1.6 km

OTHERS

- ◆ Gopankoppa Bus Stop 500 mtr
- ◆ Bengeri Market 1 km
- ◆ Park 280 mtr

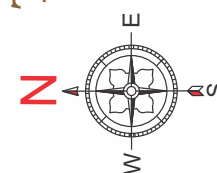
ELFIN GROUP ಎಲ್ಲವೂ ಗುಣವು

SITE OFFICE



ELFIN NEBULA
SIDDESHWARA
Residential Apartments

TOWER EMERALD



SECOND FLOOR PLAN (Typical 3rd to 8th Floor)

TOWER ORCHID



Everyday is a new joy.

Life is comfortable when you have more than just a home to call your own. Amenities at Elfin Nebula Siddeshwara Residential Apartments, include a gym on the terrace floor for the fitness enthusiasts. Daily workouts here will truly be satisfying.

A multi purpose hall, also on the terrace floor, brings you the right to live life large !! Enjoy your weekend get together with friends or celebrate your special family occasions, without the worry of having to go far in search of a suitable place. Your children too can have enjoyable birthday parties, creating memories for a lifetime !!

TERRACE FLOOR AMENITIES



Gym.



Multi purpose hall.



FACILITIES



Ample car parking and commercial stores on the ground floor.



CCTV surveillance system.



Automatic elevators with automatic rescue device - 2 Bed elevators and 2 passenger elevators.



Provision for individual gas bank connection.

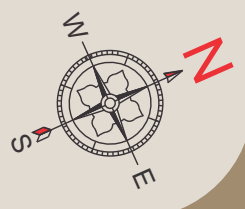


Elegant building entrance with security cabin.



Fire extinguisher.

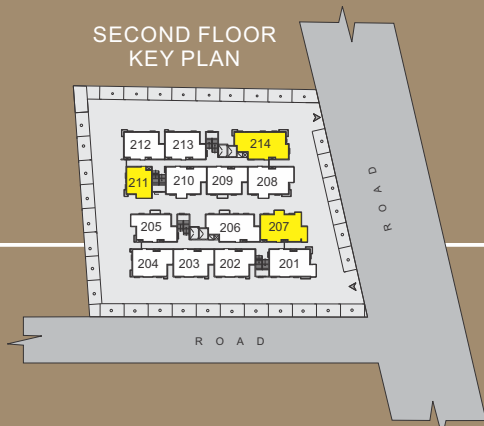




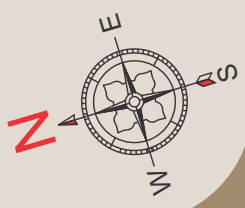
If you are a nuclear family, just starting out together, then you will find the 1 BHK homes are apt for you.



SECOND FLOOR
1 BHK - 211
SBA - 566.22sft

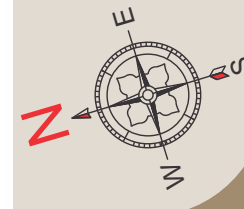


INDIVIDUAL PLAN



SECOND FLOOR
2 BHK - 207
SBA - 896.81sft

If you are a small family with toddlers or small children, then you will find the 2 BHK homes are apt for you.



SECOND FLOOR / 3 BHK - 214 / SBA - 1147.12sft



If you are a growing family looking for that extra room for your growing kids, then you will find the 3 BHK homes are apt for you.



Contemporary, yet affordable homes, personifying comfort and harmony.



Attention to every small detail makes it a caring space for you and your loved ones.



SPECIFICATIONS



FLOORING

- ◆ 2' X 2' vitrified DC flooring in all the rooms.



KITCHEN

- ◆ Granite kitchen platform with branded SS sink.



PAINTING

- ◆ Acrylic emulsion paints for external wall.



ELECTRICAL

- ◆ Concealed copper wiring of Finolex make with MCBs.
- ◆ Provision for TV & AC point.



DOOR

- ◆ Decorative laminated doors with wooden frames.
- ◆ Laminated doors in toilet.



WINDOWS

- ◆ Large sliding windows in plain/ frosted glass in powder coated/ anodized aluminum with safety grills to ensure ample sunlight throughout day.



LIFTS

- ◆ 2 bed lifts and 2 passenger lifts.



WATER SUPPLY

- ◆ Underground & overhead water tank with adequate storage capacity.
- ◆ Special water proofing treatment with china chips flooring on top floor.
- ◆ Solar water plumbing will be provided to each flat



The force behind.

Elfin Infra Builders Pvt Ltd have made a mark on the Hubli real estate scene in the "Affordable Housing" sector, exclusively to cater to the need for economical, yet well-planned residential projects with comfortable amenities and reliable investment opportunities. With a rich experience of 13 years and achievement of many milestones, Elfin's rise has been truly phenomenal. The company holds transparency and good quality construction as its mission and prides itself in its ability to consistently provide the best, in terms of project execution, timely delivery and customer satisfaction.

Indeed, customers with fulfilled aspirations across 6 residential layouts and 4 apartment projects is a paradigm in itself. All our projects stand testimony to our commitment, zeal for perfection and unique customer relationship management.

SOME OF OUR PROJECTS:

RESIDENTIAL LAYOUTS

- ◆ Elfin Halyal Park 22 acres
- ◆ Elfin Estate 11 acres
- ◆ Elfin County 9 acres
- ◆ Elfin Meadows 9 acres
- ◆ Elfin Heritage 4 acres
- ◆ Elfin Park 3 acres

RESIDENTIAL APARTMENTS

- ◆ Elfin Castle 4 luxury apartments
- ◆ Elfin Oakwood 16 apartments
- ◆ Elfin Sapphire 12 apartments

GATED COMMUNITY

- ◆ Elfin Casa



Elfin Oakwood at Saraswathpur, Dharwad



Elfin Castle at Belvanki Colony, Kusugal Road, Keshwapur, Hubli



Elfin Sapphire at Green Park, Keshwapur, Hubli